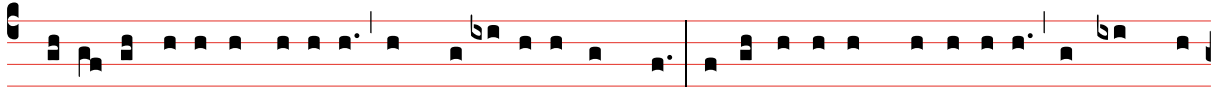
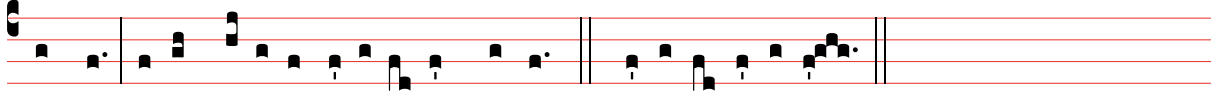


# TONUS VI

DE CANTU GLORIA PATRI (INTROITUS ET COMMUNIONIS)



GLò-ri- a Patri, et Fì-li- o, et Spi- rì-tu- i San-cto. Sic-ut e-rat in princì-pi- o, et nunc, et



semper, et in sæcu-la sæcu-lò-rum. Amen. *vel* E u o u a e.